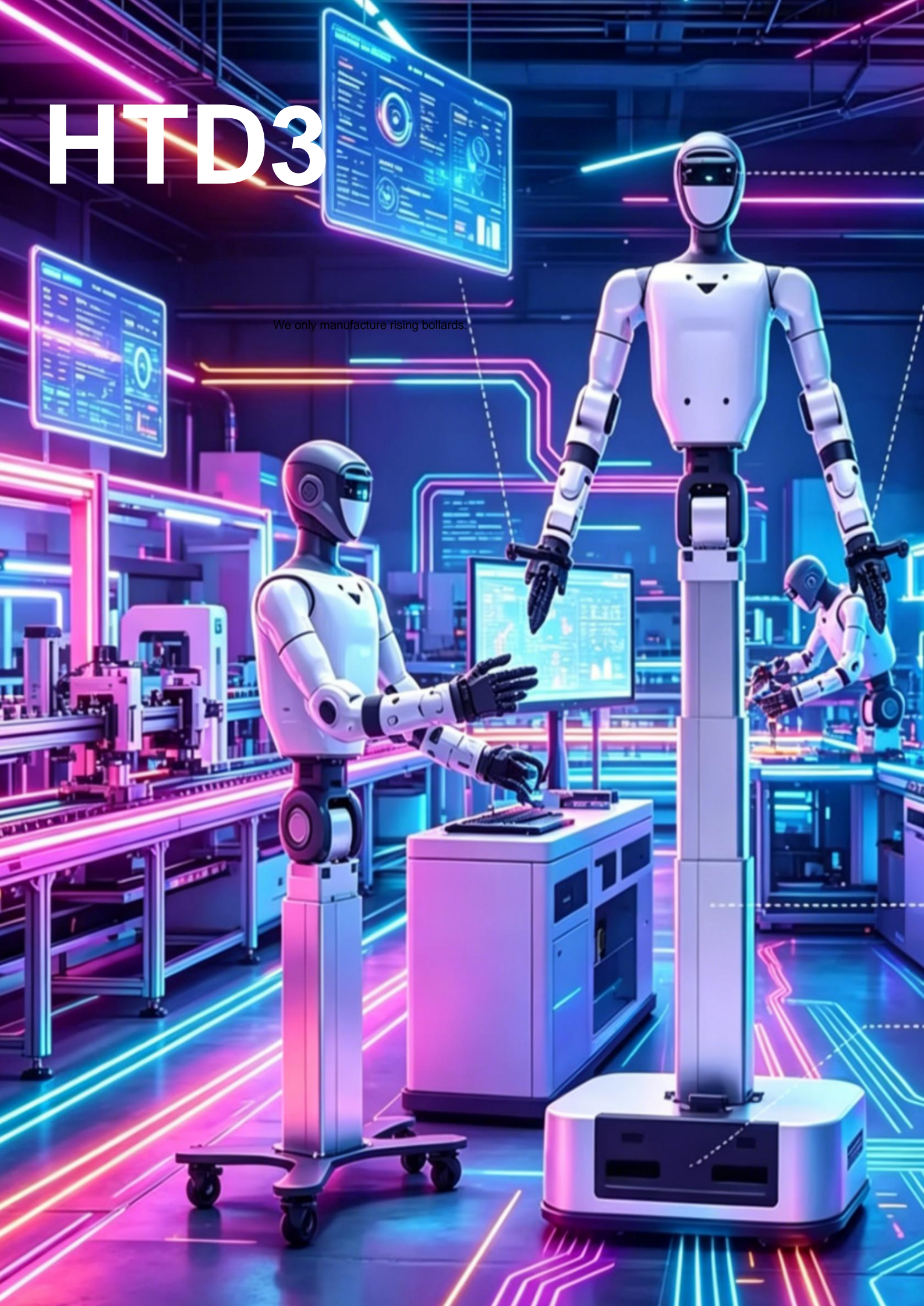


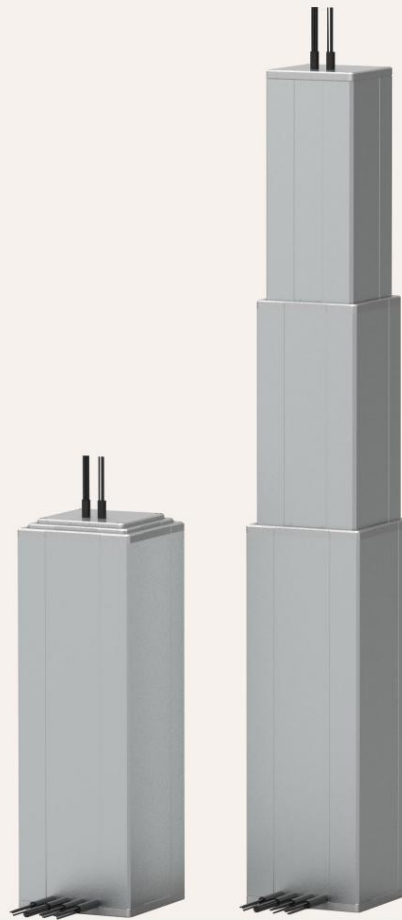
HTD3

We only manufacture rising bollards.



HTD 3

Series



Product Category

1. Application of lifting robots

The HTD3 is a 142x142 square lifting column designed by GeMin specifically for lifting robots, including mobile robots and service robots.

Custom-designed AGV/AMR intelligent equipment integrates three core advantages: precision lifting, high-load stable support, and intelligent adaptive control.

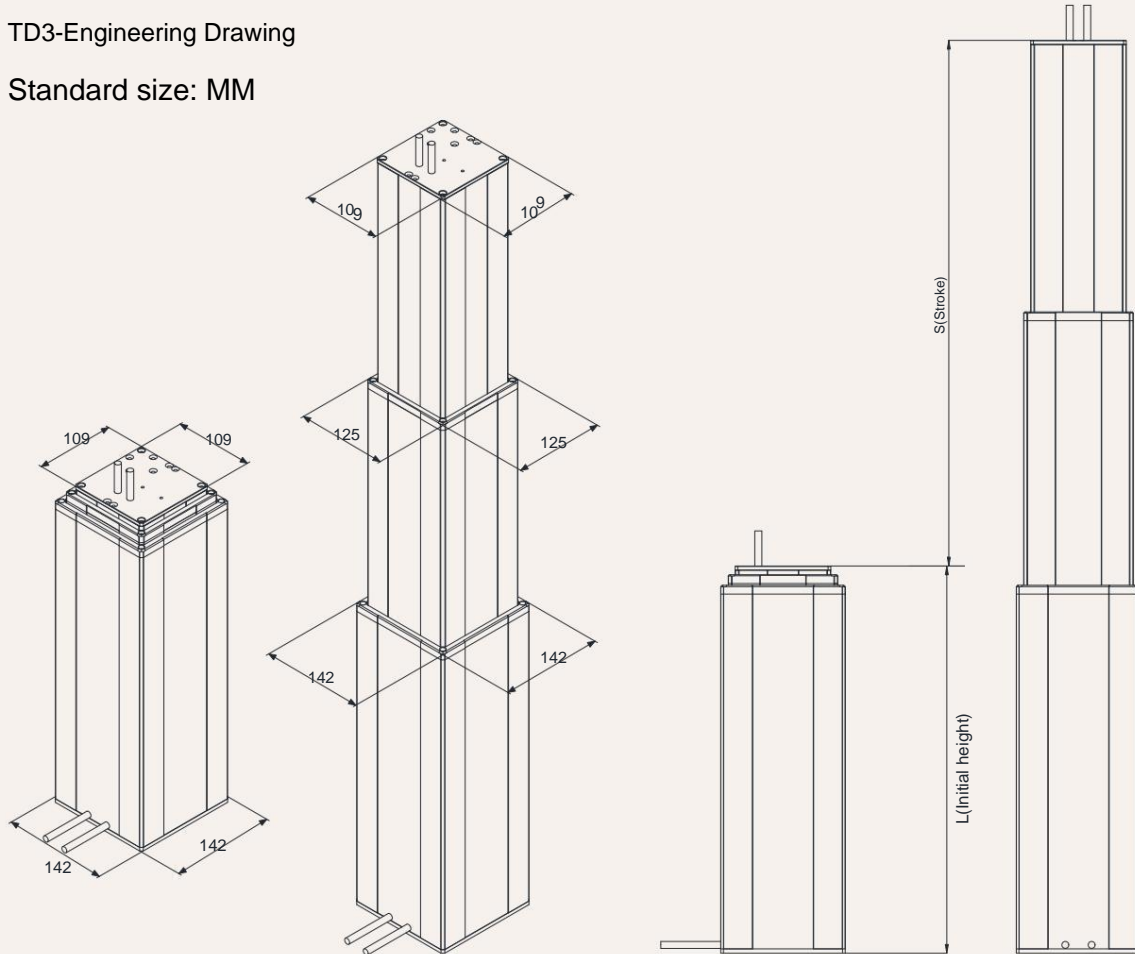
Body weight:	14.5KG(500/500)
Voltage:	48V DC, DC
Motor Options:	servo motor
Maximum thrust (pull):	1500 N / 1500N
Maximum speed@load:	0-150 mm / s (load 800N)
Minimum initial height:	Travel/2 + 200mm
Dynamic lateral moment:	1000Nm
Static lateral moment:	1800Nm
color:	Silver-gray, black (customizable)
Noise:	48~70 DB
Suitable Temperature Range:	-35 ° C ~ + 75 ° C
Protection rating:	IP54
Screw selection:	Ball screw lead: 20
Reduction ratio:	10: 1
Limiting options:	Soft limit, Mechanical limit
Communication options:	CANopen / EtherCAT, RS485 internal wiring
Wiring method:	(custom wiring)

Initial height and extended height selection

S Stroke MM	300	400	500	600	700	800
L Installation Size	350	400	450	550	600	700
S+L Extended height	650	800	950	1150	1300	1500

TD3-Engineering Drawing

Standard size: MM

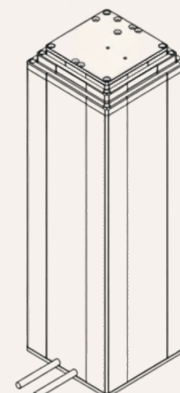
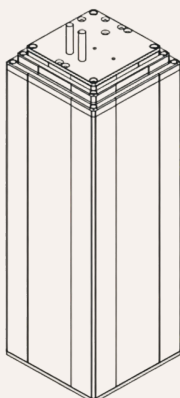


Motor cable exit point:

0 = Top panel, top cable exit

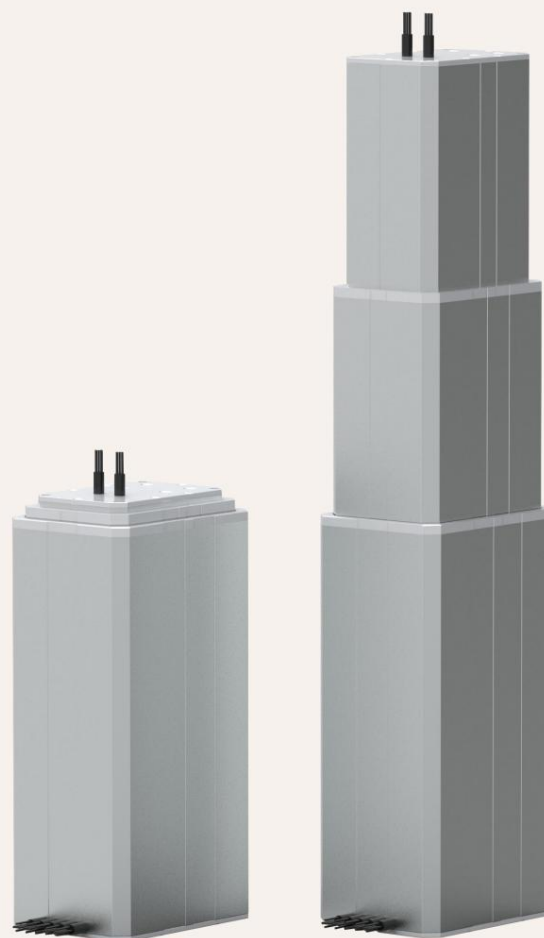
1 = Side, upper side exit line

2 = Side, lower side exit line



HTA3

Series



Product Category

1. Application of lifting robots

The HTA3 is a 193x141 rectangular lifting column designed by GeMin for lifting robots, specifically for mobile robots, service robots.

Custom-designed AGV/AMR intelligent equipment integrates three core advantages: precision lifting, high-load stable support, and intelligent adaptive control.

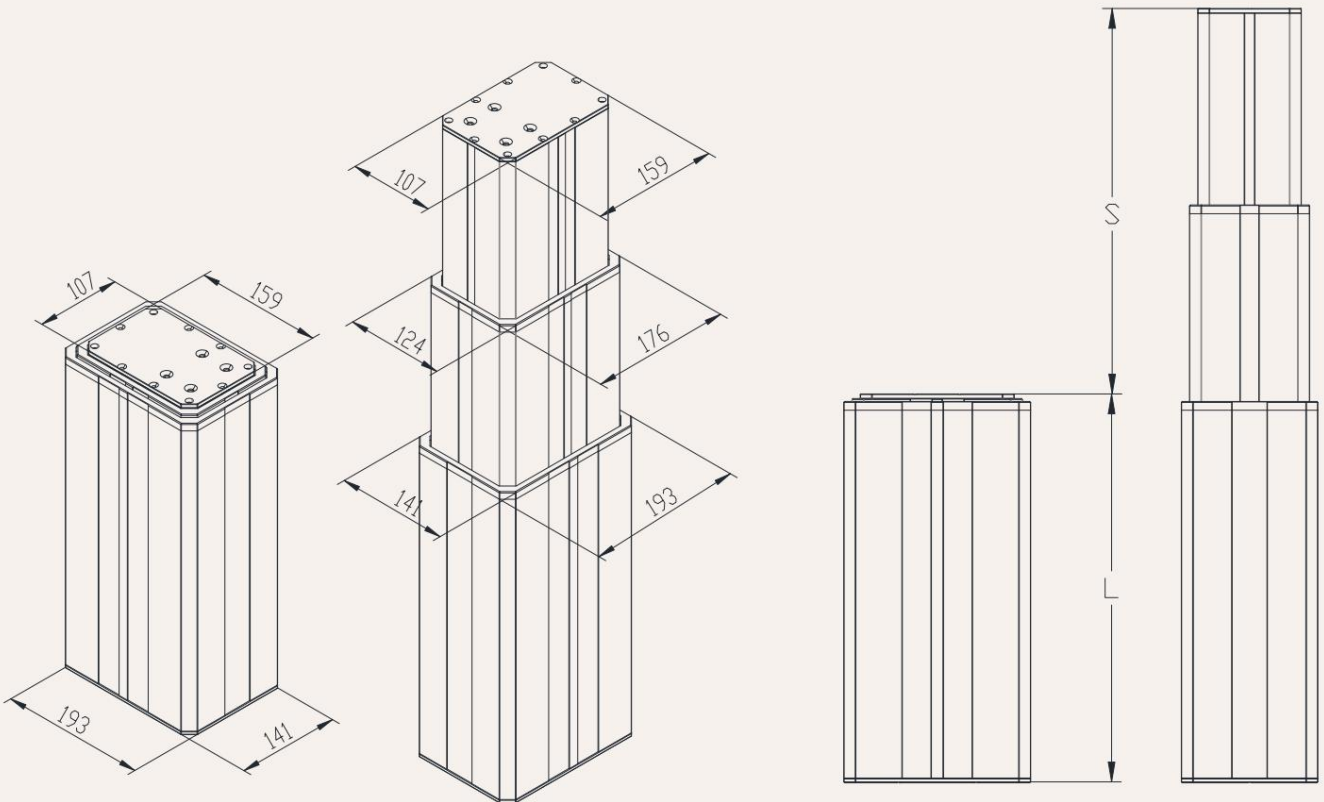
Function Overview

Body weight:	17KG (400/400)
Voltage:	48V DC, DC
Motor Options:	servo motor
Maximum thrust (pull):	1500 N / 1500N
Maximum speed under load:	0-150 mm / s (load 800N)
Minimum initial height:	Travel/2 + 200mm
Dynamic lateral moment:	1800Nm
Static lateral moment:	2000Nm
color:	Silver-gray, black, (customzed)
Voice:	48~70 DB
Suitable Temperature Range:	-35 ° C ~ + 75 ° C
Protection rating:	IP54
Screw selection:	Ball screw lead: 20
Reduction ratio:	10: 1
Limiting options:	Soft limit , Mechanical limit
Communication options:	CANopen / EtherCAT, RS485
Wiring method:	internal wiring, (custom wiring)

Initial height and extended height selection

S Stroke MM	300	400	500	600	700	800
L Installation dimensions	350	400	450	550	600	700
S+L Extended height	650	800	950	1150	1300	1500

TA3 - Engineering Drawing Standard size MM

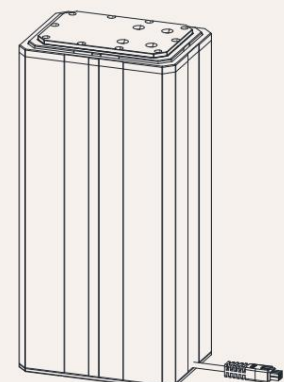
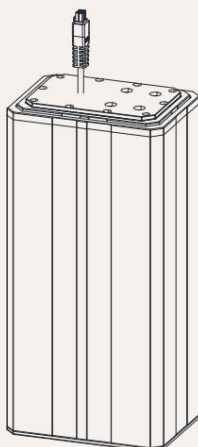


Motor cable exit point:

0 = Top panel, top cable exit

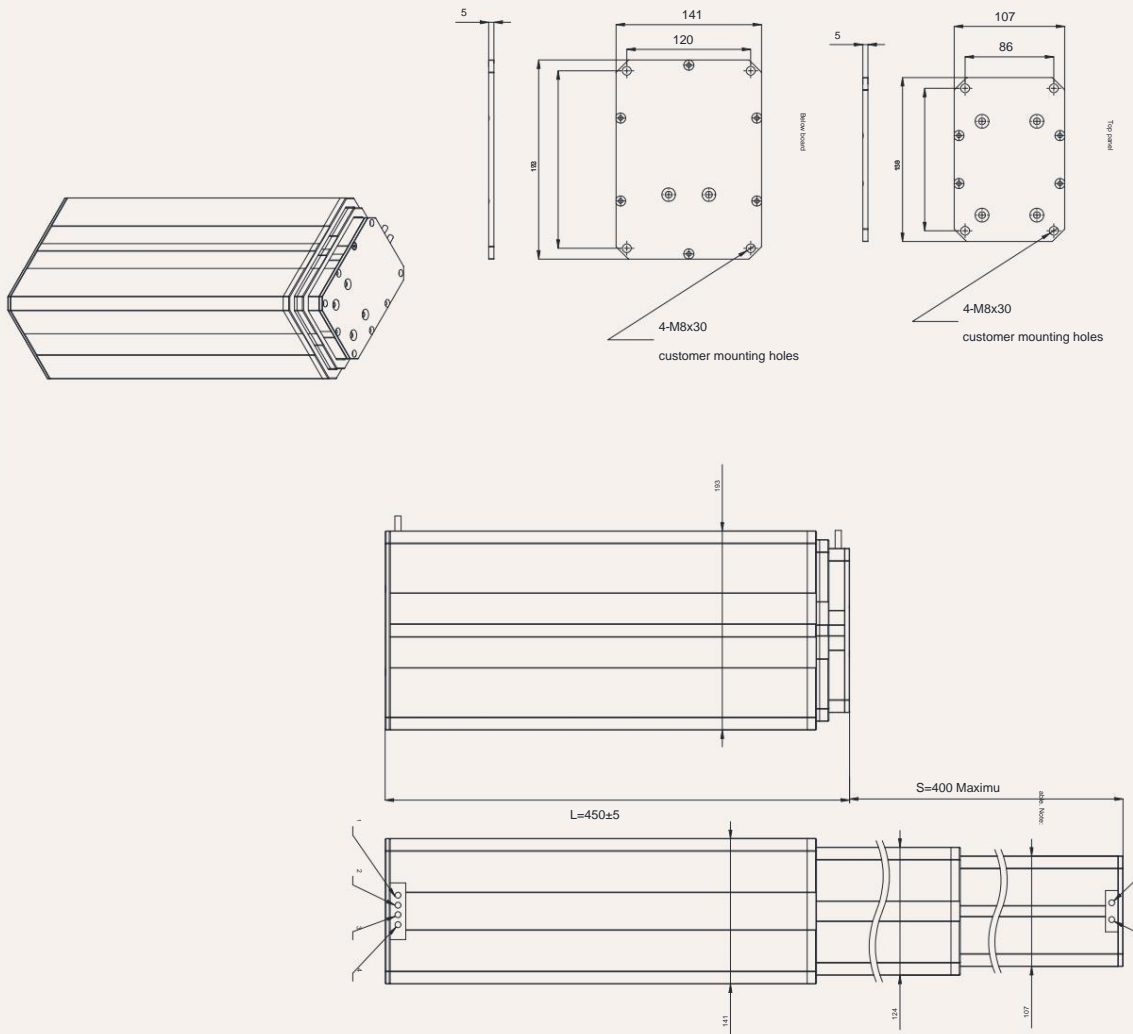
1 = Side, top exit line

2 = Side, bottom exit line



TA3 - Engineering Drawing

Standard size



HTA3

48= 48V DC

We only manufacture rising bollards.

高清双目相机

可更换多款末端

单自由端头爪
三指/五指灵巧手



可升降身高调节

身高范围约1260-1880mm

可选配移动底盘

移动速度 $\leq 1.5m/s$

HT Model Selection Code Table

HTD3 - 48 A *** *** - O1 O1 0 1 T N N 30

Model prefix	HTD3 = HTD3 three-section		HTA3 = HTA3 three-section		
Voltage	48 = 48v DC	24 = 24v DC	K = customized		
Loading (n) @ Speed	0-100MM/S	0-200MM/S			
Stroke (mm)					
Installation dimensions (mm)	Please refer to page 4 for notes: Before selecting a size, please refer to the valid parameter table!				
Upper type	O1 = Standard pipe type, M8 mounting screws recessed 30mm. K = Customization		O2 = Enlarged panel type, 8mm mounting hole		
Lower type	O1 = Standard, M8 mounting screws recessed 30mm. K = Customization		O2 = Enlarged panel type, 8mm mounting hole.		
Cable outlet Position	0 = Top of the upper panel 4= Side of the inner routing line	1 = Upper side 5=Inner side of the line	2 = lower side	3=Inner wiring panel	
Cable type	0 = Standard servo drive cable	1 = bare wire	7 = Waterproof plug	K = Customized	
Lead screw option	G = ball screw				
Control Method	N = No control				
Communication Protocol	C = CANopen	E =EtherCAT	R= RS485		
Line length	07 = Line length 0.7	10 = 1.0 M line length	15 = Line length 1.5 M	20 = Line length 2.0 M	
	30 = Line length 3.0 M	40 = Line length 4.0M	50 = Line length 5.0 M	60 = Line length 6.0M	
	70 = Line length 7.0 M	70 = Line length 8.0 M	90 = Line length 9.0 M	00 = Customization	