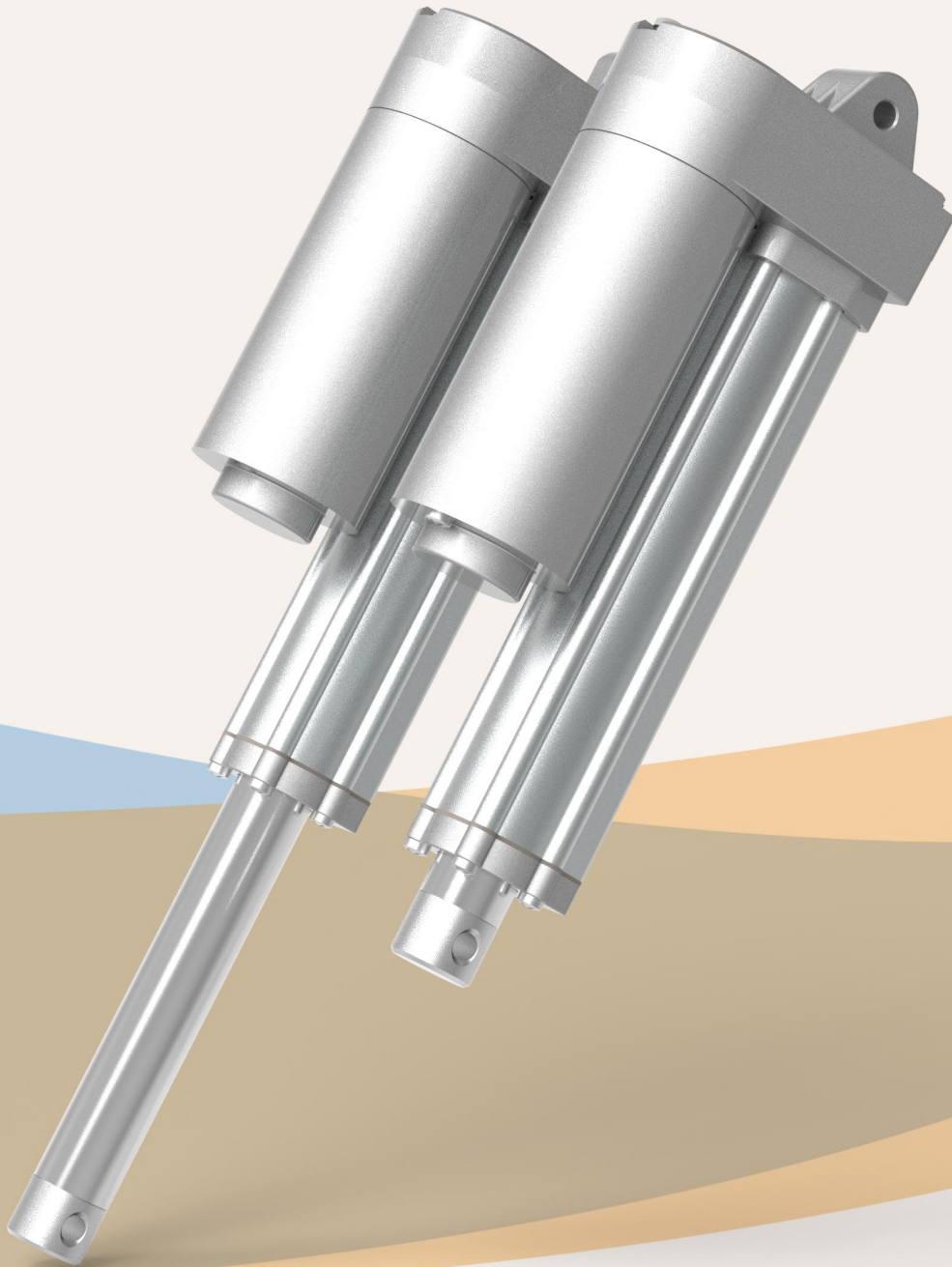


HTA18

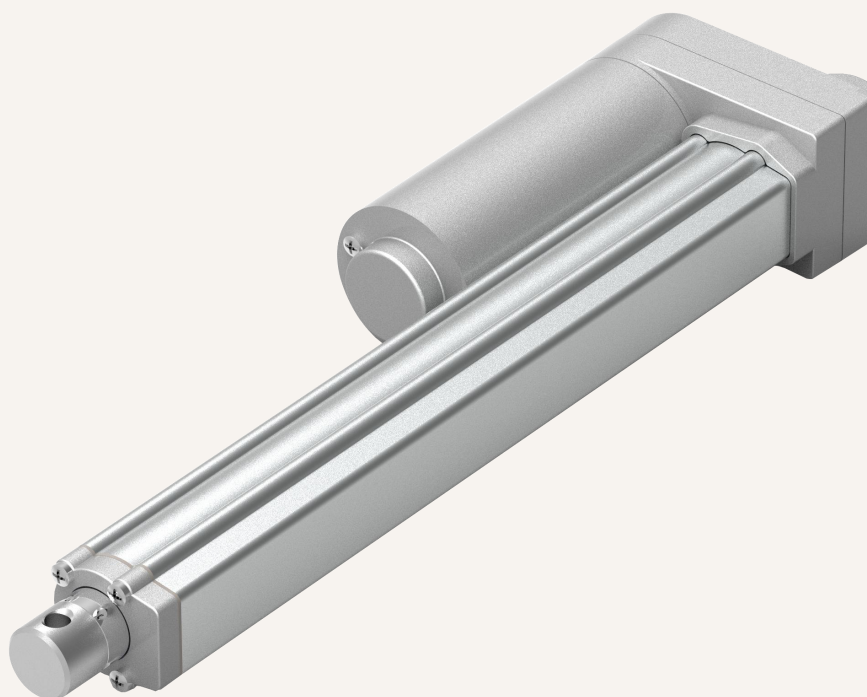
Series
Actuator



HTA18

Series

Actuator



Product categories

1. Furniture applications
2. Medical applications
3. Industrial applications
4. Automotive applications
5. Security applications

Download 3D model



HTA21 is one of the most distinctive electric actuator products developed by GeMinG. It is suitable for furniture and work environments, such as TV lifting and home care bed height adjustment. One of the features of HTA21 is that it uses a three-section telescopic function to provide stable movement and is compatible with the smallest installation size and longer stroke options.

Functional Overview

Operating voltage:	12V DC or 24V DC or 36V or 48V DC
Maximum thrust:	4,500N (thrust only)
Speed at full load:	5.mm / s (load 4,500N)
Minimum installation size:	Stroke + 125mm
Dynamic lateral torque:	30Nm
Static lateral torque:	50Nm
Color:	Silver or black
Voice:	55DB
Safety certification:	Comply with ISO9001-2008,
Operating temperature range:	-25 ° C ~ + 70 ° C
Full performance temperature range:	+5 ° C ~ + 45 ° C
Protection level:	IP68
Screw selection:	Trapezoidal screw
Other options:	Hall sensor, active signal, passive signal
Control options:	Synchronous control (synchronous error-free), independent control, CAN bus
CE and RoHS compliant, compact size	
Suitable for small space applications	High-strength metal zinc alloy gearbox and housing, Built-in limit switch (but not adjustable)

Actuator for sweeper harvester application



Application examples: positioning, sweeping car

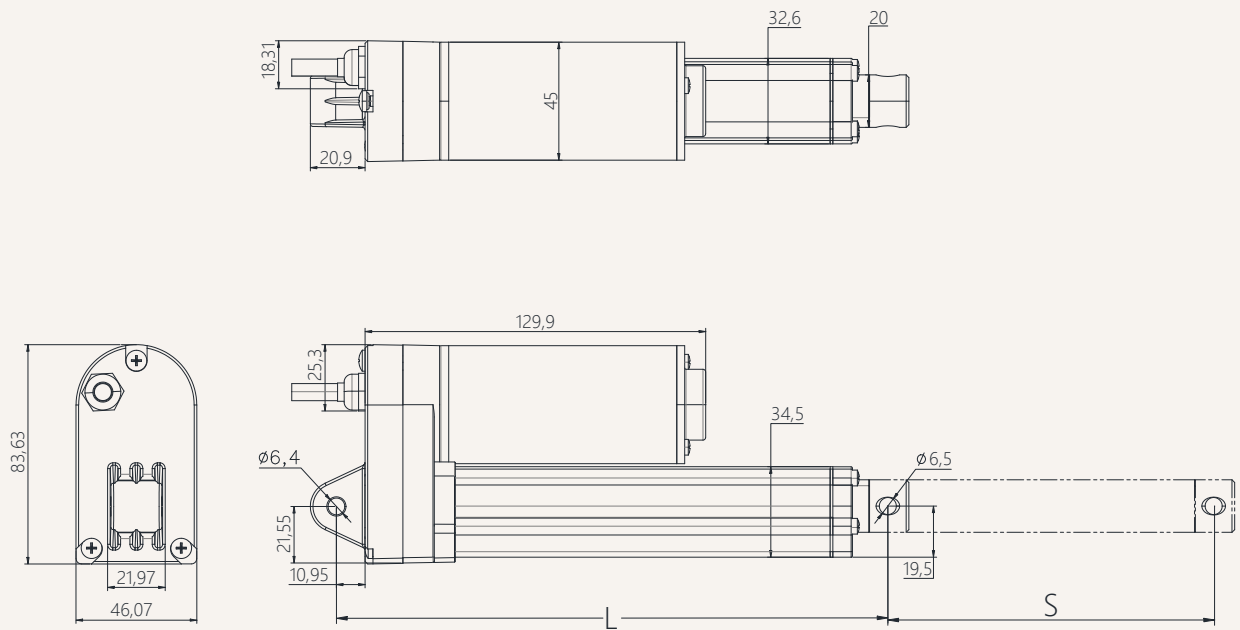
Actuators replace hydraulic and pneumatic cylinders

Better controllability, smaller installation space and no maintenance

hassles

Drawings

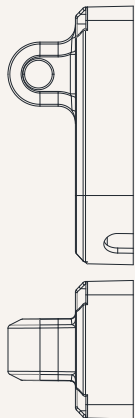
Standard size
MM



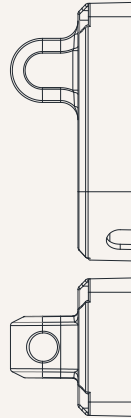
- S: Stroke
- L: Retracted length
- L = Stroke + 105mm
- Stroke greater than 1000MM, installation size L = Stroke + 120MM

tallation angle (counterclockwise)

0 = 0 Degrees

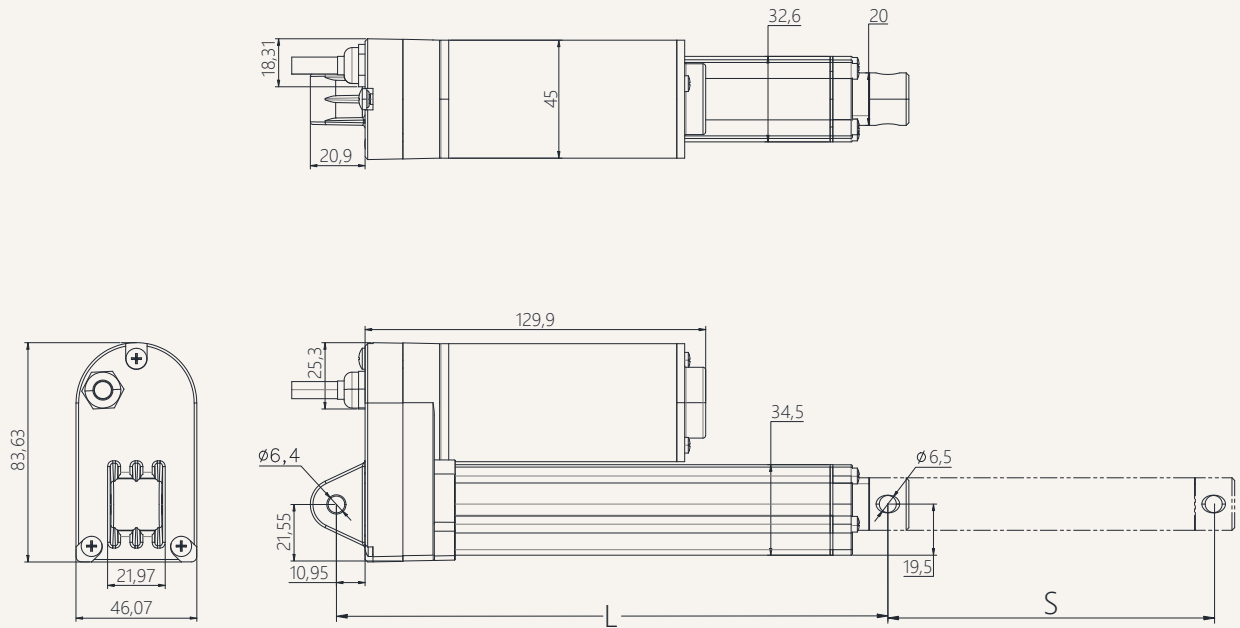


9 = 90 Degrees



Drawings - Potentiometer

Standard size
MM



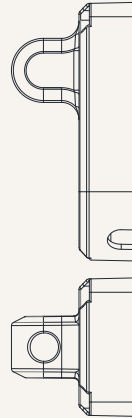
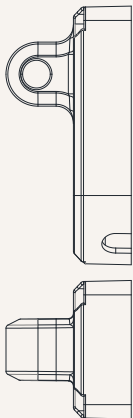
- S: Stroke
- L: Retracted length
- L = Stroke + 125mm

Stroke greater than 1000MM, installation size L = Stroke + 140MM

Installation angle (counterclockwise)

0 = 0 Degrees

9 = 90 Degrees



load and speed

Code	Rated load Thrust N	Pull N	Self-locking force static conditions static N	Rated load current A	Output speed no load 24V DC mm/s	Rated load 24V DC mm/s
Motor voltage (24V DC)						
A	3,500	3,500	4500	5.1	5.0	4.0
B	2,200	2,200	2,500	5.1	10	8.0
C	1,500	1,500	000	5.1	15	12
D	1,000	1,000	1,000	5.1	22	17
E	500	500	500	5.1	44	36
F	300	300	000	5.1	66	53

Remark

1. The speed and current on the upper side are the materials that extend when pushed.
2. For 12V motor, the speed is about the same and the current is about 2 times higher.
3. The current & speed in the table are the test average values in the extension direction under thrust application.
4. The current & speed in the table and graph are the test average values of the GeMinG control box configuration, and there is an error of about 10% depending on the control box model.
(The voltage is about 29V DC at no load, and drops to about 24V DC at rated load)

Stroke: minimum value $\geq 20\text{mm}$, please refer to the table below for the maximum value of load and stroke

load (N)	Maximum stroke (mm)
2,000	50-200
1,200	201-300
1,000	301-400
800	401-600
600	601-900

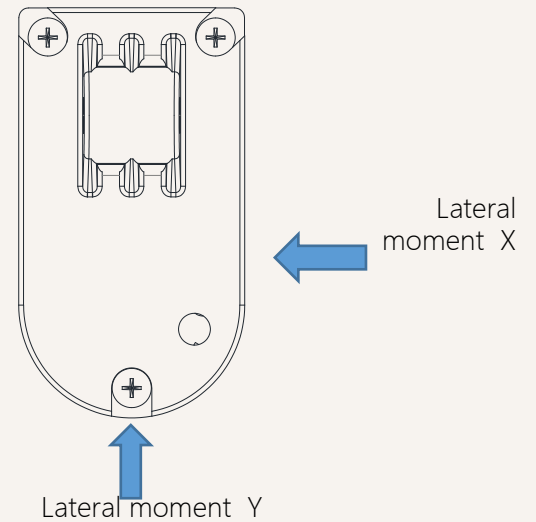
Remark:

Lateral moment Y direction = $X \times 0.8$

Static lateral moment = dynamic $\times 2$

Dynamic lateral moment (Nm)-X direction

stroke	S+105	S+125
100-200	30	50
300-500	25	40
500-700	20	30
700-900	10	20



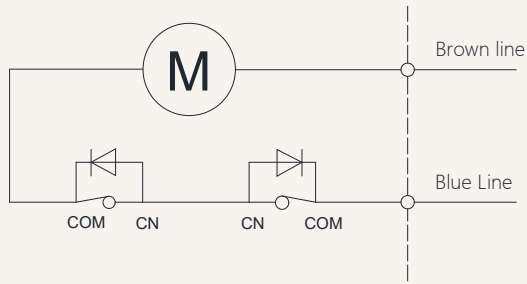
Stroke installation size reference chart

HTA18 Series	stroke ± 2 (mm)					Install ± 2 (mm)				
strokeMM	100	150	200	250	300	350	400	450	500	
Install MM	205	255	305	355	420	470	520	570	620	
weight KG	1,2	1.4	1.6	1.8	2.1	2.3	2.5	2.7	3.2	

Actuator wiring diagram

No signal feedback wiring diagram

Code: N



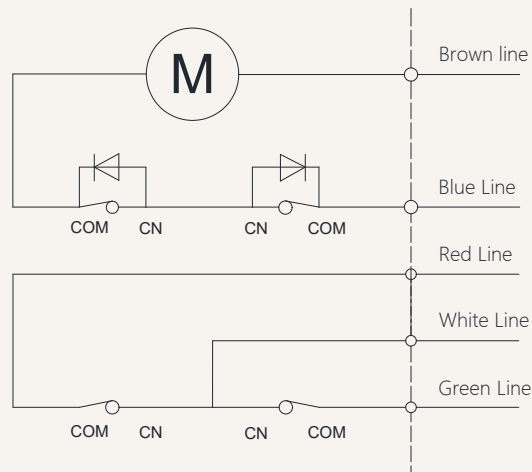
Wiring Instructions:

- 1] Brown lead: motor positive +
- 2] Blue lead: motor negative pole -
- 3] When the push rod is extended: the brown wire is positive +, the blue wire is negative -
- 4] When the push rod is retracted: the blue line is positive +, the brown line is negative -

Actuator wiring diagram Built-in control module

Built-in controller wiring diagram

Code: NY



Wiring Instructions:

- 1] Brown lead: motor positive +
- 2] Blue lead: motor negative pole -
- 3] When the push rod is extended: white line + red line
- 4] When the push rod retracts: white line + green line
- 5] White line: control output common line.
- 6] White and red lines: stretch out,
- 7] White and green lines: retract,
- 8] Wireless remote control, use wired control simultaneously.

Other signal descriptions

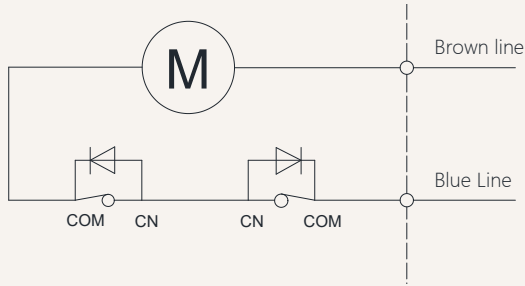
Feedback signal	Description	Function
Active endpoint feedback signal	Voltage with this model	When the push rod reaches the end point, a signal will be fed back. This signal will always exist and will disappear during the operation of the push rod., When the push rod reaches the end point, it will feedback a signal. This signal always exists when the input power is not turned off. When the input power is turned off, the signal disappears. The signal will also disappear during the operation.
Passive endpoint feedback signal	No voltage	

Note: For other needs, please contact the GeMinG team

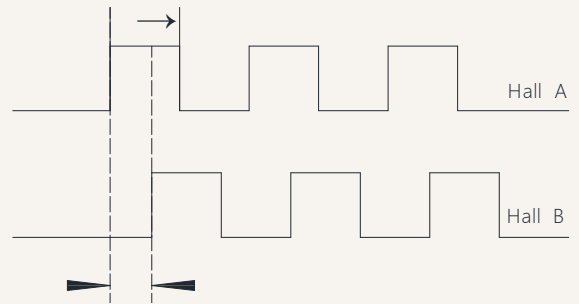
Signal feedback **Hall sensor**

Hall signal motor circuit diagram

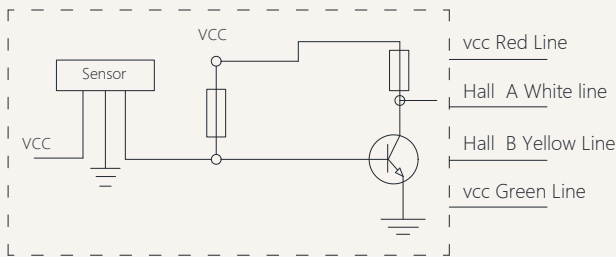
Code: H



Hall signal output waveform diagram



Schematic diagram of the internal circuit of the Hall signal



Wiring Instructions:

- 1] Brown lead: positive pole of motor +
- 2] Blue lead: negative pole of motor -
- 3] Red lead: VCC 5V voltage input +
- 4] Green lead: GND 5V voltage input -
- 5] White lead: Hall signal output A
- 6] Yellow lead: Hall signal output B

Notes:

- 1) Support dual-channel/single-channel Hall encoder
- 2) Current-consuming digital output
- 3) High-speed response frequency from: 0 KHz-100 KHz
- 4) Applicable temperature range:-40 °C~+125 °C

Characteristics	Symbol	Test conditions	MI	RE	M	Unit
Supply voltage	Vcc	----	3.5	---	24	V
Output saturation voltage	Vce/sat	Vcc=14V ; Ic=20mA	---	300	700	MV
Output leakage current	1 cex	Vce=14V ; Vcc=14V	---	<0	10	UA
Input voltage	1 ce	Vcc=20V ; Output open	---	1	10	M
Output fall time	R	Vcc=14V ; RL=820Ω ; CL=20pF	---	0.3	1.5	US

HTA18 Model Description Selection Code Table



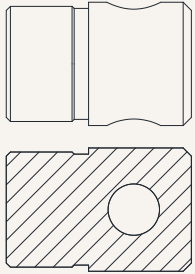
HTA18 - 24 - B - 200 - 325 - O1 - O1 - 1 - 1 - T - A - N - 07
 ① ② ③ ④ ⑤ ⑥ ⑦ ⑧ ⑨ ⑩ ⑪ ⑫ ⑬

①	Product number	HTA18			
②	Voltage	12=12V DC	24=24V DC	36=36V DC	48= 48V DC
③	Load(n)@Speed (mm/s)	See page 06			
④	Stroke(mm)	See page 06			
⑤	Installation size(mm)	Note: Before selecting a size, please refer to the valid data sheet! See page 05			
⑥	Upper type See page 13	O1 =Conventional ordinary type, hole diameter 8.5mm U1 = U-shaped, groove width 8mm, hole diameter 8.5mm M1 = Type M, M14 thread, depth 20 mm T1 = T-type, M14 thread, length 20mm L1 =L shape, width 8mm, aperture 8.5mm G1 = Spherical bearing, bore 10mm, model GS10	O2 = Conventional ordinary type, hole diameter 10.5mm U2 = U-shaped, groove width 8mm, hole diameter 10.5mm M2 = MType M, M16 thread, depth20 mm T2 = T-type, M16 thread, length 20mm L2 = L shape, width 8mm, aperture 10.5mm G2 = Spherical bearing, bore 12mm, modelGS12		
⑦	lower type	O1 =Conventional ordinary type, hole diameter 8.5mm U1 = U-shaped, groove width 8mm, hole diameter 8.5mm	O2 = Conventional ordinary type, hole diameter 10.5mm U2 = U-shaped, groove width 8mm, hole diameter 10.5mm		
⑧	Installation angle (counterclockwise)	0 =0° , Degree		9 =90° , Degree	
⑨	Please refer to the outlet type	1 = Dare wire 4 = Four-pin straight plug 7 = Waterproof plug		2 = 01 Straight plug 6 = Six-pin straight plug 0 = Customized	
⑩	Lead screw options	T = Trapezoidal screw (default preferred)		G= Ball screw rod	
⑪	Control method	A = No Control	NY =Integrated wired control NW=Integrated wireless control	NT = Synchronous control NC = CAN bus	D= Customized
⑫	Signal output options	N = No	H =Hall sensor	D = Potentiometer	W=passive signal U=active signal
⑬	Cable length	07 = 700mm 30 = 300mm	10 = 1000mm 40 = 4000mm	15 = 1500mm 70 = 7000mm	20= 2000mm 00 =Customized

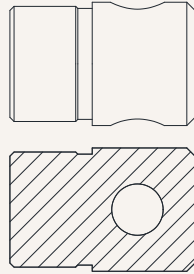
HTA18 Attachment Description Selection Code Table

Upper end form (extended):

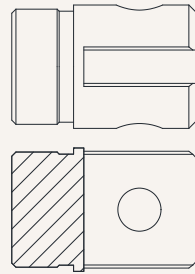
O1=Ordinary type, hole diameter 6.1mm



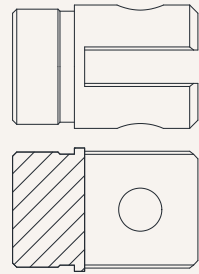
O2=Ordinary type, hole diameter 8.1mm



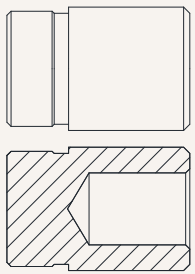
U1 = groove width 8.1mm, hole diameter 6.1mm



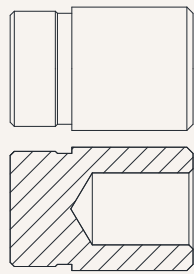
U2 = groove width 8.1mm, hole diameter 8.1mm



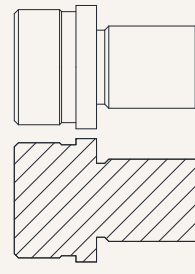
M1 = Type M, M12 thread, depth 20 mm



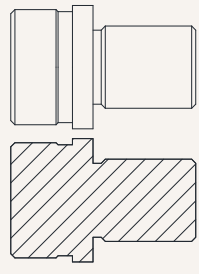
M2 = Type M, M14 thread, depth 20 mm



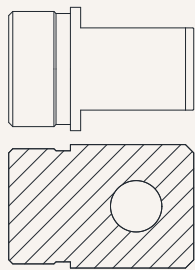
T1 = T-type, M12 thread, length 20mm



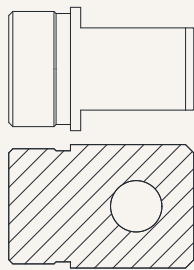
T2 = T-type, M14 thread, length 20mm



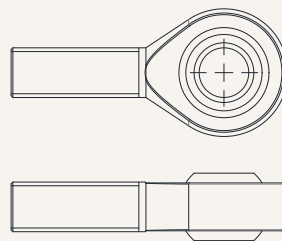
L1 = L shape, width 6mm, aperture 6.1mm



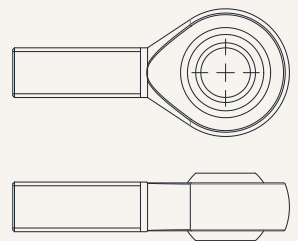
L2 =L shape, width 6mm, aperture 8.1mm



G1 = Spherical bearing, bore 10mm, model GS10



G1 = Spherical bearing, bore 12mm, model GS12



KZ = Customized

HTA18 Attachment Description Selection Code Table

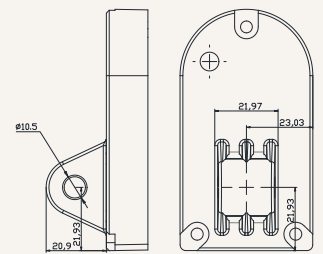
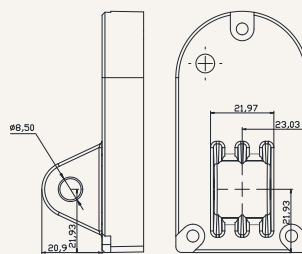
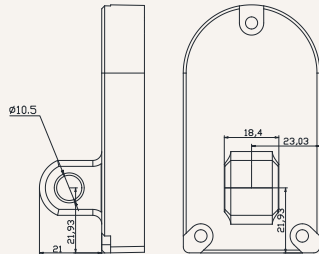
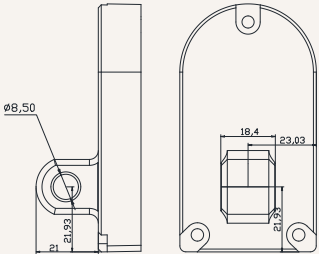
Lower form (tail):

O1=Ordinary type, hole diameter 12.5mm

O2=Ordinary type, hole diameter 13.5mm

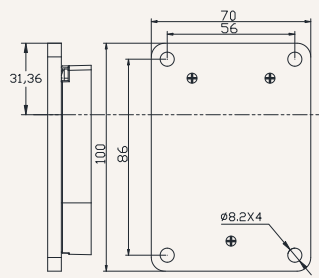
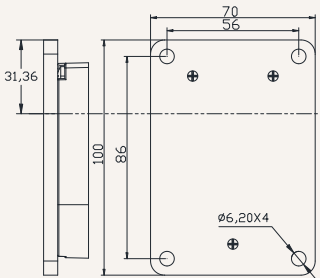
A1 = groove width 10.1mm, hole diameter 12.5mm

A2 = groove width 10.1mm, hole diameter 13.5mm



P1 = Type M, M18 thread, depth 20 mm

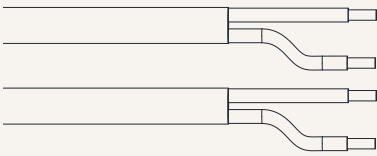
P2 = Type M, M20 thread, depth 20 mm



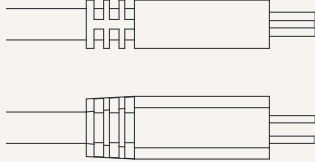
KZ = Customized

Power Cord Plug Type Code Table

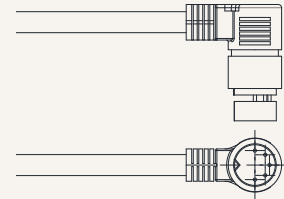
1 = Bare wire



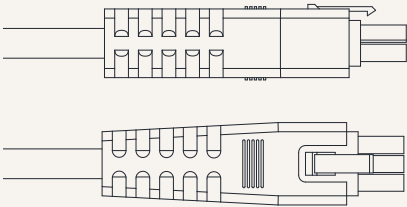
2 = O1 Straight plug



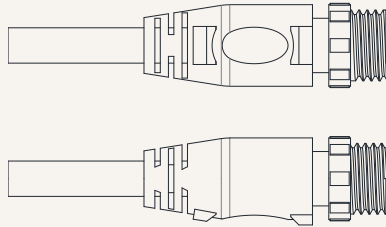
3 = 4-pin angled plug



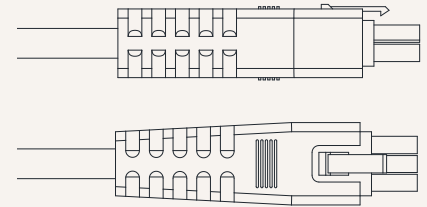
4 = 4-pin straight plug



8 = Waterproof plug



9 = 6-pin straight plug



0 = Customized

Terms of Use

The user is responsible for determining the suitability of GeMinG products for a specific application.

GeMinG products are subject to change without prior notice.