

# HTA28-YB

Series  
Actuator



# HTA28-YB

## Series

Actuator



### Product categories

1. Furniture applications
2. Medical applications
3. Industrial applications
4. Automotive applications
5. Security applications

Download 3D model



#### Product Features:

Advantages: High protection (IP65/IP67); POM gears (self-lubricating, quiet); excellent self-locking force (worm gear drive, with high self-locking ability)

Disadvantages: Relatively poor durability and impact resistance

Applications: Furniture, medical equipment, automation equipment, and other applications requiring high noise and protection levels.

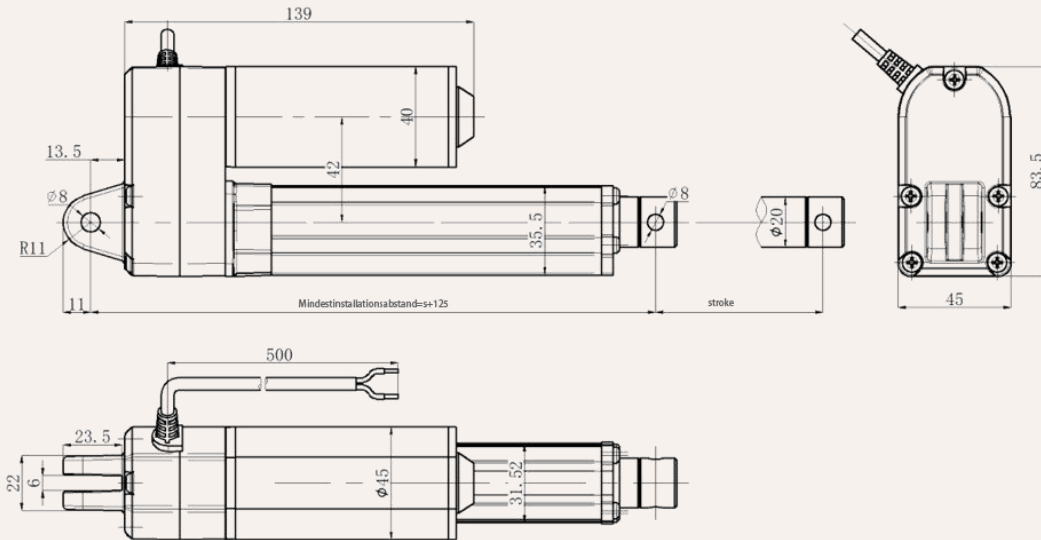
#### Functional Overview

Operating voltage:	12/24/36/48V DC, custom voltages available
Maximum thrust:	2000N
Speed:	13 ~ 55mm/s
Minimum installation size:	Stroke + 125mm

Dynamic lateral torque:	30Nm
Static lateral torque:	50Nm
Color:	Silver-gray (black customizable)
Voice:	≤45db
Safety certification:	Comply with ISO9001-2008,
Operating temperature range:	-20°C ~ 60°C (customizable -40°C-85°C)
Full performance temperature range:	+5 ° C ~ + 45 ° C
Protection level:	IP65/IP67
Screw selection:	Trapezoidal screw
Other options:	Hall effect, magnetic switch, high/low level output, etc.
Control options:	Wired controller, wireless controller, etc.
CE and RoHS compliant, compact size	independent control, CAN bus
Suitable for small space applications	High-strength metal zinc alloy gearbox and housing, Built-in limit switch (but not adjustable)
Service Life:	10,000 cycles

Drawings

Standard size  
MM



$10 \leq \text{stroke} < 400$ , minimum installation distance	Stroke+125
$400 \leq \text{stroke} < 1000$ , minimum installation distance =	Stroke+175
$1000 \leq \text{stroke} < 1500$ , minimum installation distance =	Stroke+225

Special Note: The rod end spherical bearing affects the minimum installation distance. Dimensions are as follows:

6#: Minimum installation distance = Stroke + 145;

8#: Minimum installation distance = Stroke + 150;

10#: Minimum installation distance = Stroke + 155;

12#: Minimum installation distance = Stroke + 160;

Custom flange designs are also available. Please contact us for specific front flange dimensions.

load and speed									
Transmissi on ratio	Guide (mm)	speed (mm/s)		Maximum thrust (N)	Self-locking force (N)	Full load current (A)			
		Unloaded	load			12V	24V	36V	48V
								7	3.5
14	3	13.5	7.5	2,000	2,500	7	3.5	2.65	1.8
	4	18	10	1,800	2,000				
	5	23	12.5	1,500	1,800				
	7.5	34.5	18.5	1,000	1,200				
	12	55	30	800	1,000				

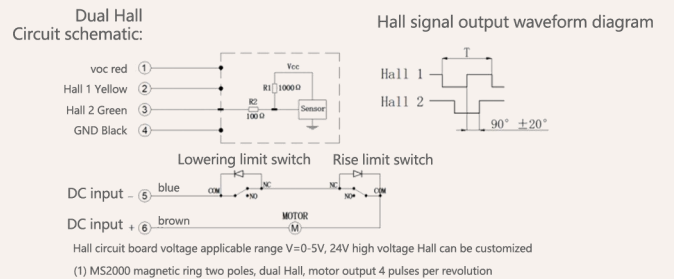
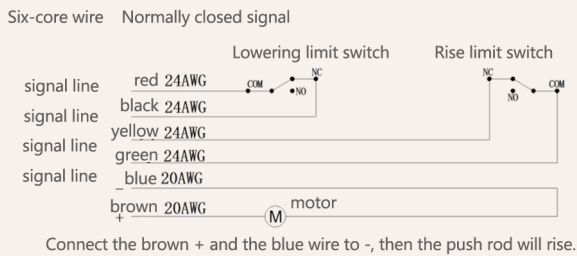
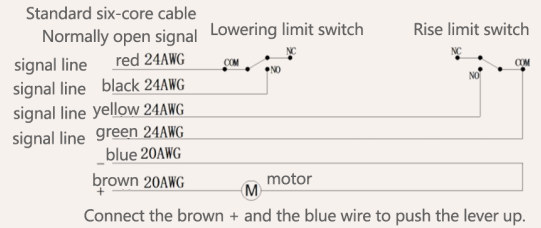
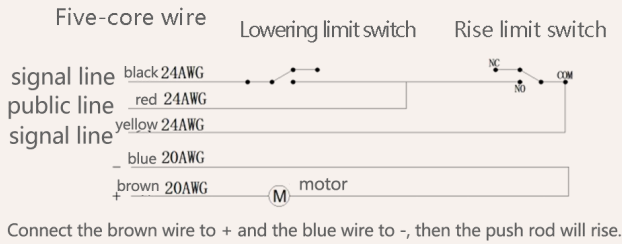
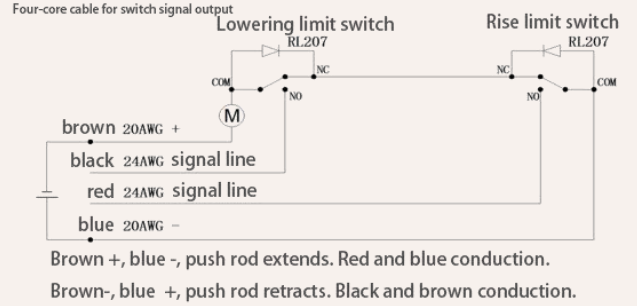
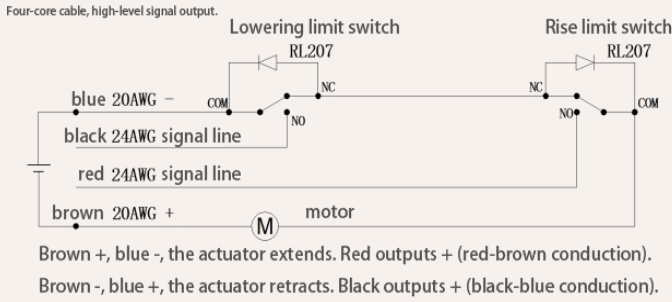
- (1) Selection method: Prioritize thrust, then consider no-load/load speed;
- (2) To ensure self-locking force, choose parameter codes with the smallest lead;
- (3) Note the difference between no-load and full-load speeds. The full-load speed of this actuator is approximately half the no-load speed;
- (4) The data in the table are measured at room temperature. Due to the precision of parts processing and installation, there may be errors, with a maximum deviation of  $\pm 10\%$ .

Load (N)	Maximum stroke (mm)
2500	200-500
1800	501-900
1000	901-1500

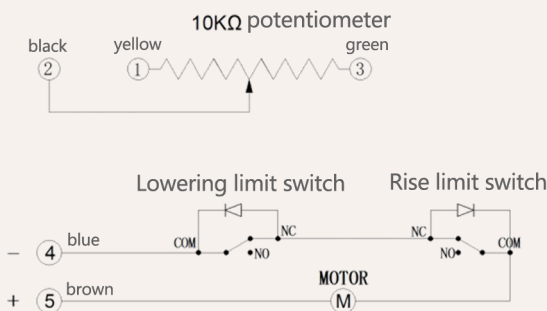
#### Stroke installation size reference chart

HTA29 Series	Stroke $\pm 2$ (mm)					Install $\pm 2$ (mm)				
Stroke	100	200	300	400	500	600	700	...	1000	
Install	225	325	425	525	675	775	875	...	1225	

Actuator wiring diagram



potentiometer circuit schematic



The color of the motor wires may vary due to differences in incoming materials. Please call us if you have any questions! For more wiring diagrams and electrical schematics, please call us.

# HTA28-YB Model Description Selection Code Table

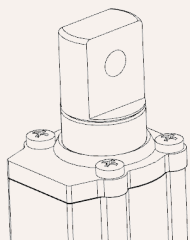
HTA28YB - 24 - B - 200 - 265 - O1 - O1 - 1 - 1 - T - A - N - 07  
 ① ② ③ ④ ⑤ ⑥ ⑦ ⑧ ⑨ ⑩ ⑪ ⑫ ⑬

①	Product Model	HTA28-YB			
②	voltage	12/24/36/48V DC, custom voltages are also available.			
③	Loading (n) @ Speed (mm/s)	<a href="#">Please refer to page 04</a>			
④	STROKE(mm)	<a href="#">Please refer to page 04</a>			
⑤	Installation dimensions (mm)	Note: Please refer to the valid parameter table <u>before selecting</u> a size! <a href="#">Please refer to page 04</a>			
⑥	Upper type <a href="#">Please refer to page 07</a>	①: Milling flat on both sides ②: Standard connector ③: Grooving + milling flattening on both sides ④: Grooved joint ⑤: Internal threaded connector ⑥: External threaded connector	⑦: Spherical plain bearing		
⑦	Lower type <a href="#">Please refer to page 07</a>	①: Standard type ②: Rotate 90 degrees ③: Integrated flange	④: Flat bottom type		
⑧	Installation angle (counterclockwise)	0 =0°	1 =90°		
⑨	Please refer to the cable type.	1 =bare wire 3 =Four-pin straight insertion 0 =Customization	2 = Four-pin bend 4 = Six-pin straight insertion		
⑩	Screw options	T=Trapezoidal lead screw (default preferred)	G =		
⑪	Control method	A = Uncontrolled	Wired controller	Wireless controller	D= Customization
⑫	Signal output options	Hall	Magnetic switch	High and low level output	
⑬	Line length	07 =Line length 700mm 30 =Line length 3000mm	10 = Line length 1000mm 40 =Line length 4000mm	15 =Line length 1500mm 70 =Line length 7000mm	20= 2000mm 00 =Customization

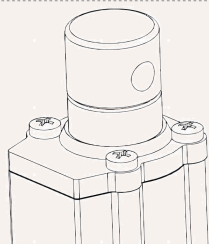
# Attachment instructions for selecting the code table

Extending the upper part:

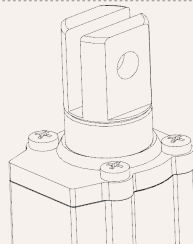
①: Milling flat on both sides



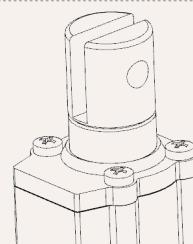
②: Standard connector  
②: Standard connector



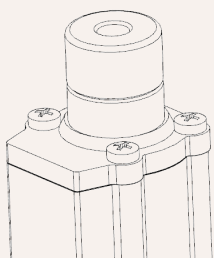
③: Grooving + milling flattening on both sides



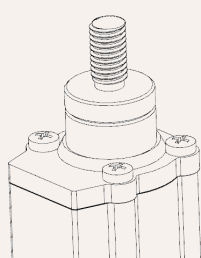
④: Grooved joint



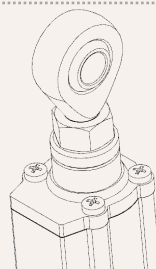
⑤: Internal threaded connector



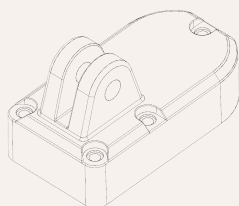
⑥: External threaded connector



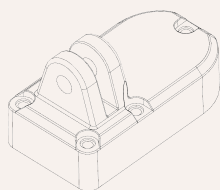
⑦: Spherical plain bearing



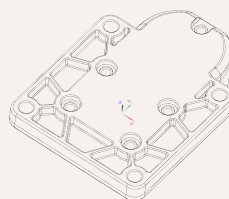
①: Standard type



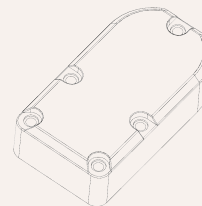
②: Rotate 90 degrees



③: Integrated flange



④: Flat bottom type

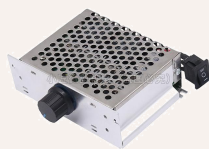


Standard accessories for electric linear actuators:

Reverse (rocker-type) switch



DC motor speed controller



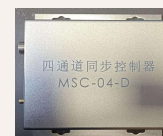
Switching power supply



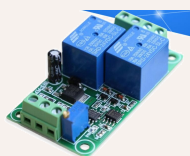
Magnetic switch



Hall Synchronization Control



Overload/overcurrent protection



Wired controller



Wireless controller



High-power wireless controller



U/H mounting bracket



# Attachment instructions for selecting the code table

---

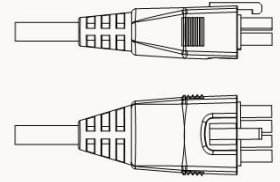
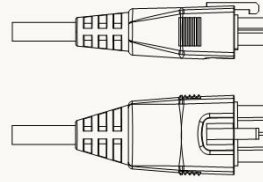
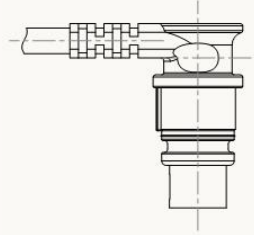
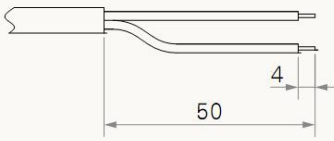
Outgoing plug-in type:

1 =bare wire

2 = Four-pin bend

3 =Four-pin straight insertion

4 = Six-pin straight insertion



0 =Customization